

Large Universal Premium Fixed Flat Panel Mount

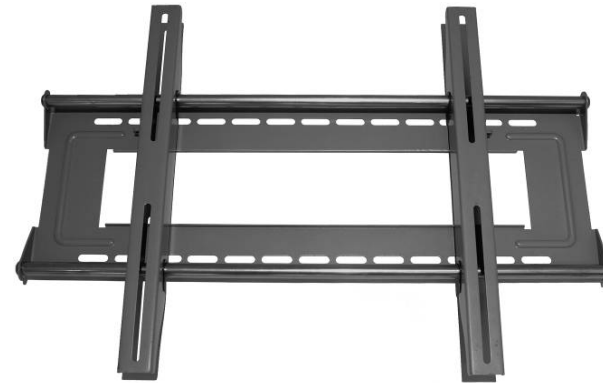
Hardware List:

Hardware Kit 1

Letter	Qty	Description
A	4	Philips Screws M4 x 16mm, Zinc
B	4	Philips Screws M4 x 36mm, Zinc
C	4	Philips Screws M5 x 16mm, Zinc
D	4	Philips Screws M5 x 36mm, Zinc
E	4	Philips Screws M5 x 46mm, Zinc
F	4	Philips Screws M6 x 16mm, Zinc
G	4	Philips Screws M6 x 36mm, Zinc
H	4	Philips Screws M6 x 46mm, Zinc
I	4	Philips Screws M8 x 16mm, Zinc
J	4	Philips Screws M8 x 36mm, Zinc
K	4	Philips Screws M8 x 46mm, Zinc

Hardware Kit 2

Letter	Qty	Description
L	4	Square Washer
M	4	Safety Washer; 1/2" ID
N	4	3/8" Wall Anchors
	1	Push Pin
1	4	5/8" Spacer
2	4	3/4" Spacer
	1	Hex wrench
	4	3/8" Lag Bolt; 3 1/2" long
	4	Lag Bolt Washer



Wall Plate and Mounting Rails

Determine the Mounting Location

Measure the width and height dimensions of the plasma display.
Mark the wall with the desired location for the center of the display.

Important: Make sure that there is adequate mounting space available for the display, considering the display dimensions.

The Mounting Guide

Locate the supplied mounting guide. (Fig. 1)

Fold the dust collector along the marked lines:

1. Fold main channel up.
2. Crease and fold the tab sections inward.
3. Fold outer portion of tab around the back of the guide, and then insert tab into slot.

Insert pin (supplied) into the center mark of the guide.

Remove the tape strip from the back of the guide.

Using the four sight holes, pin the guide to the center mark on the wall.

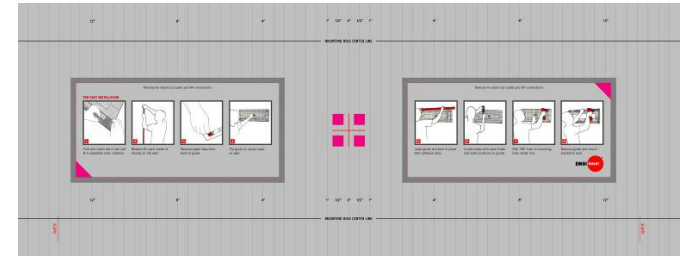


Fig. 1

Using a bubble level, precisely level the guide, and then press the adhesive backing against the wall to hold the guide in position.

Using an electronic stud finder, locate the center of the wooden studs. Mark the stud center positions directly onto the guide, along the Mounting Hole Center Line. Follow the vertical lines on the guide to transfer your marks to the opposite Mounting Hole Center Line.

Note: If mounting to masonry, simply mark the desired mounting hole locations directly onto the guide, along the Mounting Hole Center Line.

If cutting openings for an electrical outlet and/or A/V interconnect cables, carefully remove the perforated sections of the guide and then mark and cut the wallboard.

Wooden Studs - Use a 1/4" drill bit, and drill 4 mounting holes into the center of the studs.

Masonry - Use a 1/2" masonry bit, and drill 4 mounting holes. Insert wall anchors (N) into the mounting holes, and lightly tap them flush to the wall with a hammer.

Caution: Wall anchors should only be used for masonry mounting. **NEVER** use wall anchors to mount the U3 to drywall.

Carefully remove the guide from the wall, and discard.

Note: Be sure to hold the guide in an upright position so as not to spill the collected dust.

Mount the wall plate to the wall with supplied 3/8" lag bolts and washers.

Attach the Mounting Rails

Consult the supplied Hardware Cross Reference list, and locate the required hardware for your display.

For proper installation, make sure that each rail mounting slot is facing down, with the flip lock facing towards the outside of the display. (Fig. 2) Use the selected screws and the square washers (L) to mount the rails to the back of the plasma display. Adjust the rails to equal heights on the back of the display using the alignment marks on the rails as a reference. (Fig. 3) Once aligned, tightly secure the mounting screws.

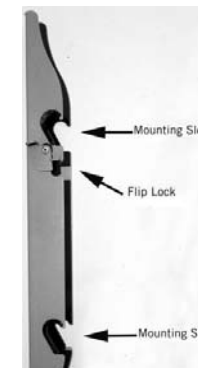


Fig. 2

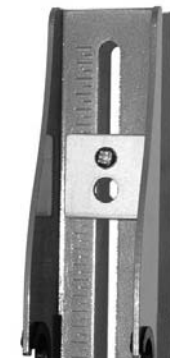


Fig. 3

Some Plasma displays have curved backs with recessed mounting lands (Fig. 4), which will require the use of a spacer (Fig. 5). For these displays, install the 5/8" (1) spacer between the display and the rail.

Note: Align tab in spacer with slot in mounting rail.

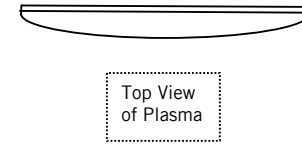


Fig. 4

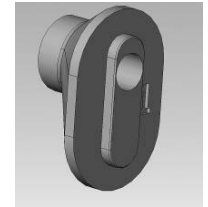


Fig. 5

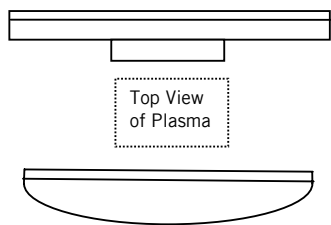


Fig. 6

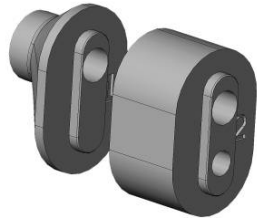


Fig. 7

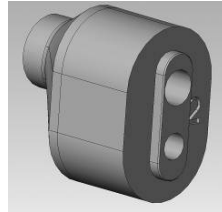


Fig. 8

For displays with protruding HDTV tuner packs or deeply curved backs (Fig. 6), a combination of the 5/8" and 3/4" spacer (1 & 2) should be used. Stack the two spacers (Figs. 7 & 8), and then install them between the display and the rail.

Hang the Display

With the help of an assistant, lift the display into position in front of the wall plate. Align the slots on the mounting rails with the rods on the wall plate, and then lower the display onto the rods. (Fig. 12) **Make sure that both rods are fully engaged before releasing the display.**

Note: Prior to lifting the display, make sure that the flip lock is in the open position, as shown in Fig. 12.

Once in place, the lateral position of the display can be adjusted by gently sliding it along the rods.

Lock the Display



Lock Open



Lock Closed

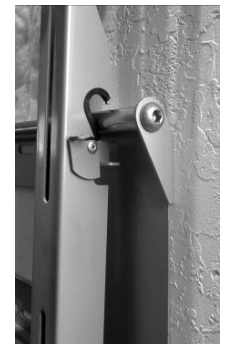


Fig.12

Engage the lock by flipping the locking tab into place over the rod; this will prevent the display from being inadvertently dislodged from the wall mount. For additional security, install a small padlock up to a 1/4" (6mm) shank diameter through the provided lock holes.

Expanding the Mount

With the addition of the optional *Extension Kit*, the mount can be configured for larger and wider displays, which extend beyond the capabilities of the standard mounting rails or mounting rods.